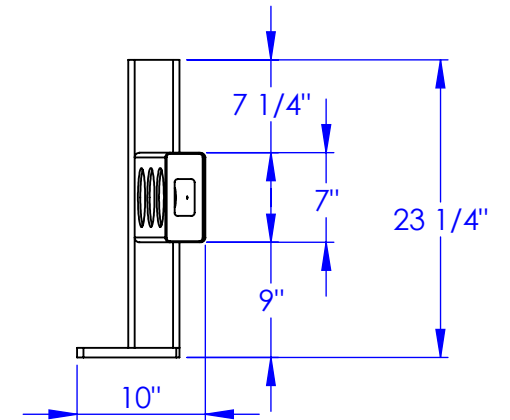
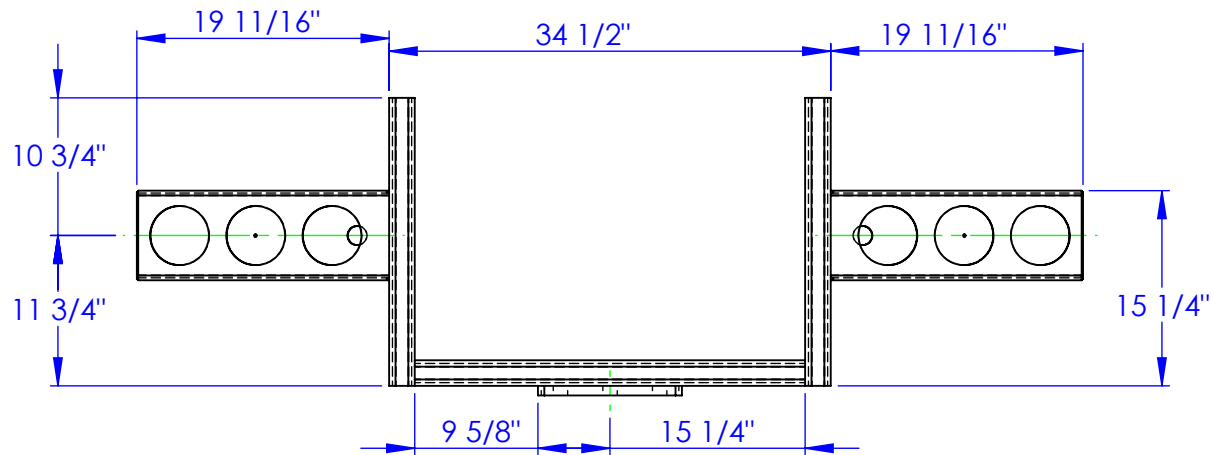
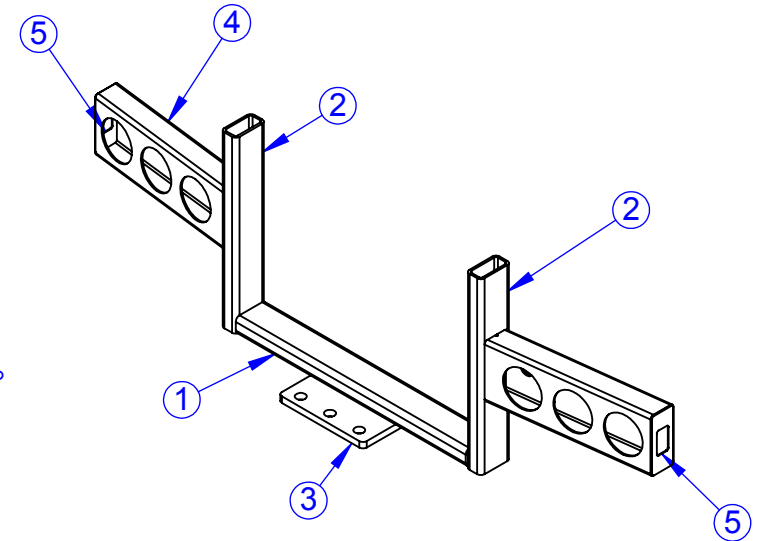
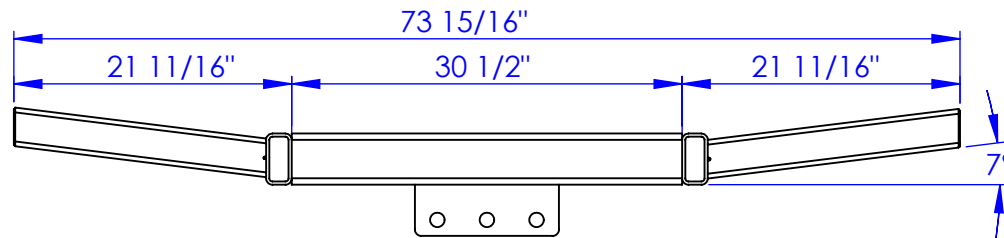


ITEM NO.	PART NUMBER	DESCRIPTION	MATERIAL	DRAWING #	QTY.
1	RH 4X2X30.5	LENGTH 30-1/2	RT 4 x 2 x 1/4	STOCK	1
2	RH 4X2X22.5	LENGTH 22-1/2	RT 4 x 2 x 1/4	STOCK	2
3	FP-HPXO-100	HITCH PLATE	3/4" PLATE	10-2600	1
4	FP-RT-ALH 7320 HB	ANGLE TAIL LIGHT HOUSING BODY	7x3x3/16" TUBING	15-2605	2
5	FP-SM-LH2044B	END CAP, TAIL LIGHT HOUSING	12ga HRS	10-2601	2

REVISIONS			
REV.	DESCRIPTION	DATE	APPROVED
A	INITIAL RELEASE	12/16/2011	



**PROPRIETARY AND CONFIDENTIAL**  
THE INFORMATION CONTAINED IN THIS DRAWING IS THE SOLE PROPERTY OF TRIPLE C INC. ANY REPRODUCTION IN PART OR AS A WHOLE WITHOUT THE WRITTEN PERMISSION OF TRIPLE C INC. IS PROHIBITED.

DIMENSIONS ARE IN INCHES TOLERANCES: FRACTIONAL $\pm 1/16$ ANGULAR: MACH $\pm 1$ BEND $\pm$ TWO PLACE DECIMAL $\pm 010$ THREE PLACE DECIMAL $\pm 005$	
MATERIAL	---
DO NOT SCALE DRAWING	

NAME	DATE
DRAWN HEATH	12/16/11
PART #	
ASM #	SUB-APEX-DROPHITCH
COMMENTS:	
REAR DROP HITCH WELDMENT	

P.O. BOX 248,  
SABETHA, KS 66534

**TRIPLE C**  
INC.

SIZE A	DWG. NO. 00-1600	REV. A
SCALE: 1:15	WEIGHT:	SHEET 1 OF 1